

www.gbattery.com

Unlimited Power
ROCKET
BATTERY

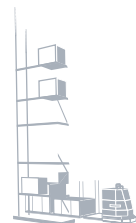
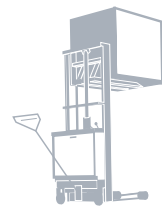
GLOBAL

ELECTRIC Traction Battery

Japanese & American Types



Dynamic force of life



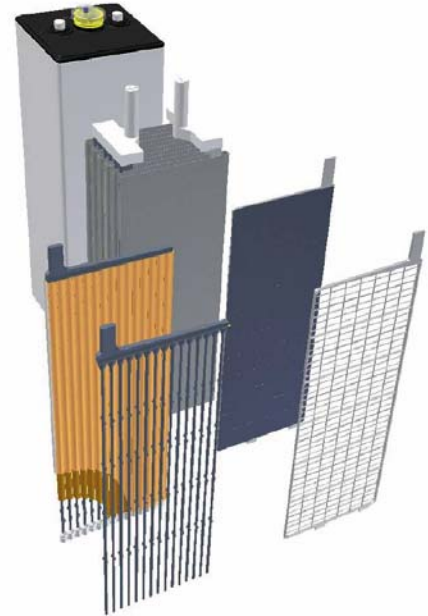
SEBANG

SEBANG GLOBAL BATTERY CO.,LTD.

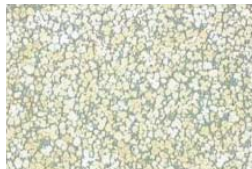
Global's advanced technology of tubular plates and new construction method ensure you longer service life of your electric vehicle.

TECHNICAL FEATURES

- 1) **Global's BS welding series** are compliant to IEC 60254-2.
- 2) **Positive Grid**
The grids produced by high pressure casting system have an excellent advantage in cycle life of traction cell due to its anti-corrosion characteristic.
- 3) **Tubular Cell**
Tubular type plates firmly hold active materials in right place and solve the problem of shedding once and for all, and ensure you of high capacity, strong power and minimum defect.
- 4) **Microporous Separators**
Microporous polyethylene separators assure ionic circulation and low internal resistance.
- 5) **Rubber Bushing**
Rubber bushing around terminal protects cover breakage and keeps plates safe from the external shocks and vibration.
- 6) **Heat-Sealed Case and Cover**
The cases and covers are made of polypropylene, which are high impact-resistant and heat-sealed for perfect leak-proof assembly.
- 7) **One-touch Vent Plug**
The transparent pop-up vent plugs with acid level indication floats are used to easily indicate acid level and convenient for easier/simpler refilling maintenance.
- 8) **P.E Tube**
P.E Tube is more environmental friendly compared to Glass Tube, contributed by no use of phenol resin.
- 9) **Wet-Filler**
By equalizing the weight of positive plate, wet-filling has an advantage in reducing capacity variation among each cells.



Cell Construction



Die-Caster Grid



P.E Tube

Application

- 1) **Low duty**
 - Single shift with lower than depth of discharge 60% 5HRC(C5)
 - Electrolyte about 30°C
- 2) **Normal duty**
 - Single shift with depth of discharge 80% 5HRC(C5)
 - Electrolyte about 30°C
- 3) **Heavy duty**
 - Single shift with depth of discharge 80% 5HRC(C5) and high discharge currents
 - Multi-shift using with or without battery change.
 - High ambient temperature.



JIS

85T / 125T



Tubular plates



Single cell



Capacity
170~1125Ah



IEC60254-1
1500 N



Recycles

JIS Motive Power

Technical Data and Performance
Weld-Bar Type

Cell Type	Capacity [5hr]	Dimensions(mm)				Weight(kg)		US Part Number
		[L]	[W]	[H]	[TH]	W/O Acid	With Acid	
VCD 170	170	61	158	395	427	7.8	10.4	
VCD 210	210	90	158	395	427	10.3	14.3	55T-9
VCD 250	250	94	158	395	427	12.3	16.0	
VCD 270	270	109	158	395	427	12.5	17.5	55T-11
VCD 320	320	128	158	395	427	14.8	20.6	55T-13
VCD 360	360	128	158	395	427	16.7	22.3	
VCD 400	400	143	158	395	427	17.0	23.5	
VCD 450	450	159	158	395	427	19.2	26.4	
VCD 500	500	175	158	395	427	21.3	29.3	
VCD 550	550	191	158	395	427	23.5	32.2	
*VCD 640	640	241	158	395	427	26.6	38.1	55T-25
VCDH 350	350	109	158	409	441	14.7	19.6	
VCDH 400	400	128	158	409	441	16.9	22.7	
VCDH 460	460	143	158	409	441	19.1	25.6	
VCDH 520	520	159	158	409	441	21.2	28.6	
VCDH 580	580	175	158	409	441	23.4	31.5	
VCDH 630	630	191	158	409	441	25.6	34.4	
VCE 450	450	128	158	453	485	19.7	26.1	
VCE 540	540	159	158	453	485	22.5	30.9	
VCE 545	545	175	158	453	485	22.8	32.3	
VCE 600	600	175	158	453	485	25.1	34.3	
VCE 660	660	191	158	453	485	27.7	37.7	
*VCE 690	690	241	158	453	485	31.3	44.6	
*VCE 740	740	241	158	453	485	33.6	46.5	
*VCE 850	850	241	158	453	485	35.9	48.5	
VCE 650	650	175	158	453	485	27.4	36.2	
*VCE 715	715	191	158	453	485	30.4	40.1	
*VCE 910	910	241	158	453	485	38.2	50.5	
*VCES800	800	203	158	453	485	32.9	43.1	
*VCES870	870	222	158	453	485	35.6	46.8	
VCFS201	201	61	158	490	522	9.6	13.3	
VCF 3	201	70	158	490	522	9.6	13.6	
VCF 3PS	201	76	158	490	522	9.7	14.2	
VCF 268	268	76	158	490	522	12.0	16.2	
VCF 280	280	90	158	490	522	12.3	17.6	
VCF 335	335	101	158	490	522	14.8	20.6	
VCF 350	350	109	158	490	522	15.0	21.4	
VCF 400	400	109	158	490	522	17.3	23.4	
VCF 6	402	128	158	490	522	17.6	25.2	
VCF 545	545	159	158	490	522	22.8	32.2	
VCI 335	335	90	158	519	551	14.6	19.8	
VCI 410	410	109	158	519	551	19.3	25.5	
VCI 490	490	128	158	519	551	19.9	27.7	
VCI 575	575	148	158	519	551	25.4	34.1	
VCI 660	660	165	158	519	551	28.1	37.9	
*VCI 740	740	185	158	519	551	31.9	42.9	
*VCI 820	820	203	158	519	551	34.8	47.0	
*VCI 900	900	222	158	519	551	37.8	51.2	
*VCI 990	990	241	158	519	551	40.8	55.4	
VCI 220	220	76	158	519	551	10.7	15.3	
VCI 225	225	61	158	519	551	10.4	13.8	
VCI 230	230	70	158	519	551	10.6	14.7	75T-7

JIS Motive Power

Technical Data and Performance
Weld-Bar Type

Cell Type	Capacity [5hr]	Dimensions(mm)				Weight(kg)		US Part Number
		[L]	[W]	[H]	[TH]	W/O Acid	With Acid	
VCI 285	285	70	158	519	551	13.2	17.0	
VCI 300	300	76	158	519	551	13.3	17.6	
VCI 360	360	109	158	519	551	16.7	23.3	75T-11
VCI 365	365	90	158	519	551	13.3	21.3	
VCI 440	440	109	158	519	551	19.3	25.5	
VCI 505	505	128	158	519	551	22.3	29.8	
VCI 510	510	148	158	519	551	22.7	31.9	75T-15
VCI 536	536	143	158	519	551	22.7	31.4	
VCI 585	585	148	158	519	551	25.4	34.1	
VCI 612	612	165	158	519	551	25.7	35.9	75T-17
*VCI 685	685	185	158	519	551	29.2	40.7	
*VCI 737	737	203	158	519	551	32.2	44.8	75T-21
*VCI 800	800	185	158	519	551	34.4	45.1	
*VCI 845	845	203	158	519	551	37.4	49.2	
*VCI 925	925	203	158	519	551	40.1	51.5	
*VCIS600	600	143	158	519	551	25.7	34.0	
*VCIS685	685	159	158	519	551	28.6	37.9	
*VCIS750	750	175	158	519	551	31.6	41.8	
*VCIS825	825	191	158	519	551	34.5	45.7	
*VCIS900	900	203	158	519	551	37.4	49.2	
*VCIS1080	1080	241	158	519	551	43.4	57.7	
VCIS25	525	126	158	519	551	22.2	29.6	
VCIS468	468	128	158	519	551	19.7	27.5	
VCIS540	540	128	158	519	551	22.3	29.8	
*VCP 245	245	148	158	337	364	12.6	18.1	
*VCP 320	320	128	158	441	468	15.8	22.4	
*VCP 400	400	148	158	485	512	20.6	29.2	
*VCP 430	430	148	158	430	457	20.2	27.3	
*VCP 600	600	191	158	453	480	28.4	38.0	
*VCP 900	900	241	158	512	539	38.2	52.9	
VCJ 3	300	61	158	691	723	13.7	18.6	
VCJ 4	400	76	158	691	723	17.6	23.8	
VCJ 5	500	90	158	691	723	21.5	28.9	
VCJ 6	600	109	158	691	723	25.4	34.6	
VCJ 7	700	128	158	691	723	29.4	40.3	
*VCJ 8	800	143	158	691	723	33.8	46.0	

REMARKS

- 1) Filled and charged cell weights $\pm 5\%$
- 2) Double pole post(*)
- 3) All specifications are changeable with or without notice.

JIS

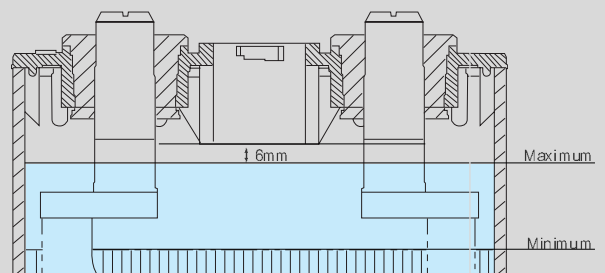


Maximum



Minimum

85T / 125T



85T / 125T Motive Power

Technical Data and Performance

Weld-Bar Type

Cell Type	Capacity		Dimensions(mm)				Weight(kg ±5%) With Acid	
	[5hr]	[6hr]	[L]	[W]	[H]	[TH]		
Standard type	85T-07	245	255	70	158	519	551	15.1
	85T-09	327	340	90	158	519	551	19.5
	85T-11	409	425	109	158	519	551	23.9
	85T-13	490	510	128	158	519	551	28.2
	85T-15	572	595	148	158	519	551	32.7
	*85T-17	654	680	165	158	519	551	37.2
	*85T-19	736	765	185	158	519	551	41.6
	*85T-21	817	850	203	158	519	551	45.9
	*85T-23	899	935	222	158	519	551	50.2
	*85T-25	981	1020	241	158	519	551	54.5
	125T-11	601	625	108	158	724	754	36.0
	125T-13	721	750	127	158	724	754	42.4
	125T-15	841	875	146	158	724	754	48.8
	*125T-17	962	1000	165	158	724	754	56.7
High capacity type	85TX-09	409	425	90	158	519	551	21.8
	85TX-11	490	510	109	158	519	551	26.2
	85TX-13	572	595	128	158	519	551	30.5
	85TX-15	654	680	148	158	519	551	35.0
	*85TX-17	736	765	165	158	519	551	39.5
	*85TX-19	817	850	185	158	519	551	44.0
	*85TX-21	899	935	203	158	519	551	48.2
	*85TX-23	981	1020	222	158	519	551	52.5
	*85TX-25	1063	1105	241	158	519	551	56.8
	125TX-11	721	750	108	158	724	754	40.4
	125TX-13	841	875	127	158	724	754	46.2
	125TX-15	962	1000	146	158	724	754	52.9
	*125TX-17	1082	1125	165	158	724	754	60.8

REMARKS

- 1) Filled and charged cell weights ±5%
- 2) Double pole post(*)
- 3) All specifications are changeable with or without notice.



Global Leader of Battery Industry

Sebang Global Battery Co., Ltd is the company representing Korean battery industry.

Now, Sebang Global Battery Co., Ltd is concentrating the efforts in order to jump to the top battery manufacturer in the world.

Sebang Global Battery Co., Ltd has led the battery industry in Korea for over half century since its establishment in 1952.

Sebang Global Battery has put forth its strength to the continuous management innovation corresponding to the rapid changing market environment, and has concentrated ceaseless efforts to the technology development in order to produce the best quality product.



SEBANG

SEBANG GLOBAL BATTERY CO.,LTD.

Head Office

708-8 Yeoksam-dong, Gangnam-gu Seoul
Tel : 82-2-3451-6201 Fax : 82-2-3451-6301

www.gbattery.com

Overseas Business Division

5th floor Sebang building (main building)
708-8 Yeoksam-dong, Gangnam-gu Seoul
Tel : 82-2-3451-6213 Fax : 82-2-538-4353